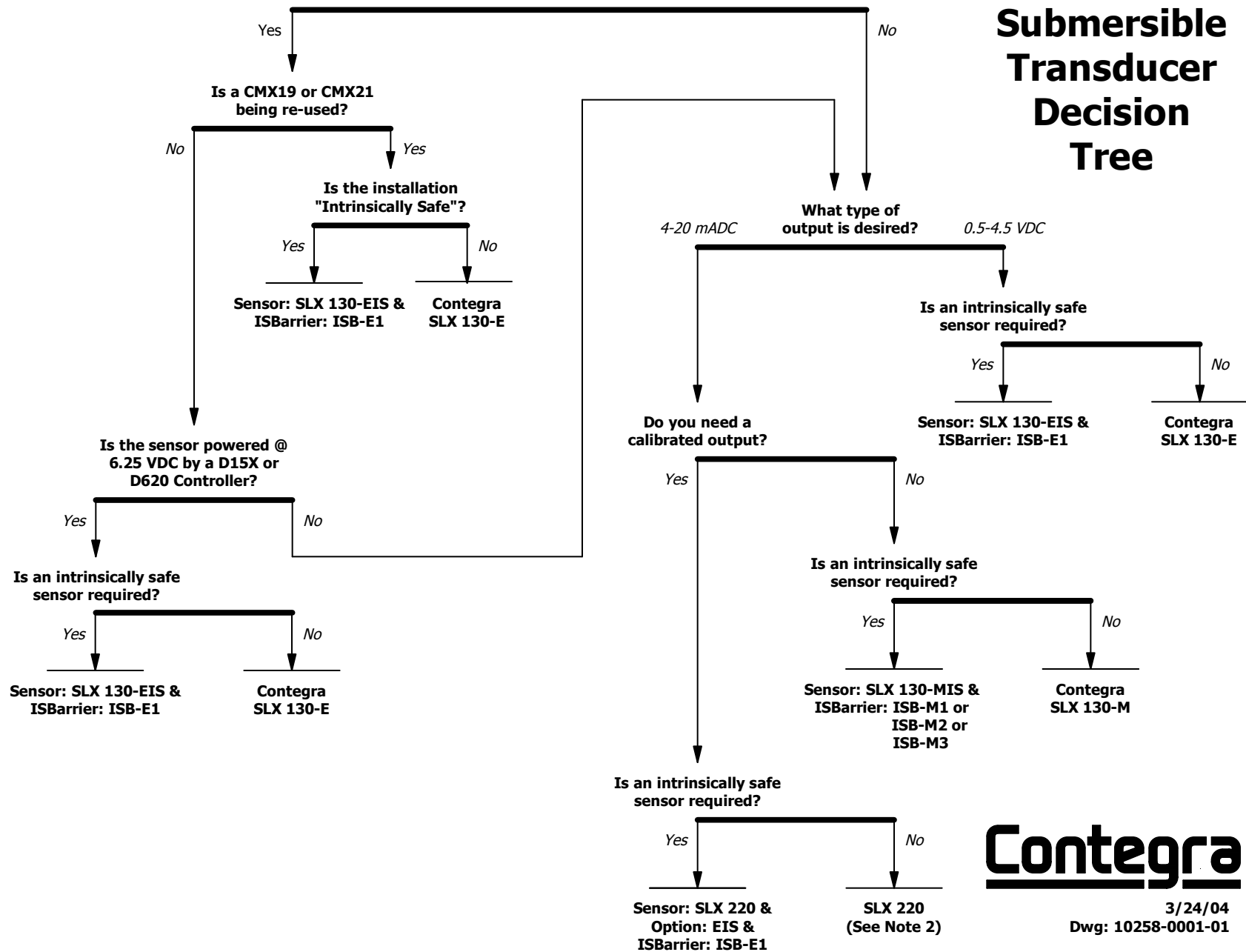


## Are you replacing an A1000 lower assembly?



Note:

- 1) An SLX 130 is a submersible level transducer that includes the sensor/housing and the specified length of cable.
- 2) An SLX 220 is a package that consists of an SLX 130 (see above) and a T420 amplifier/current transmitter.

# Contegra

3/24/04  
Dwg: 10258-0001-01